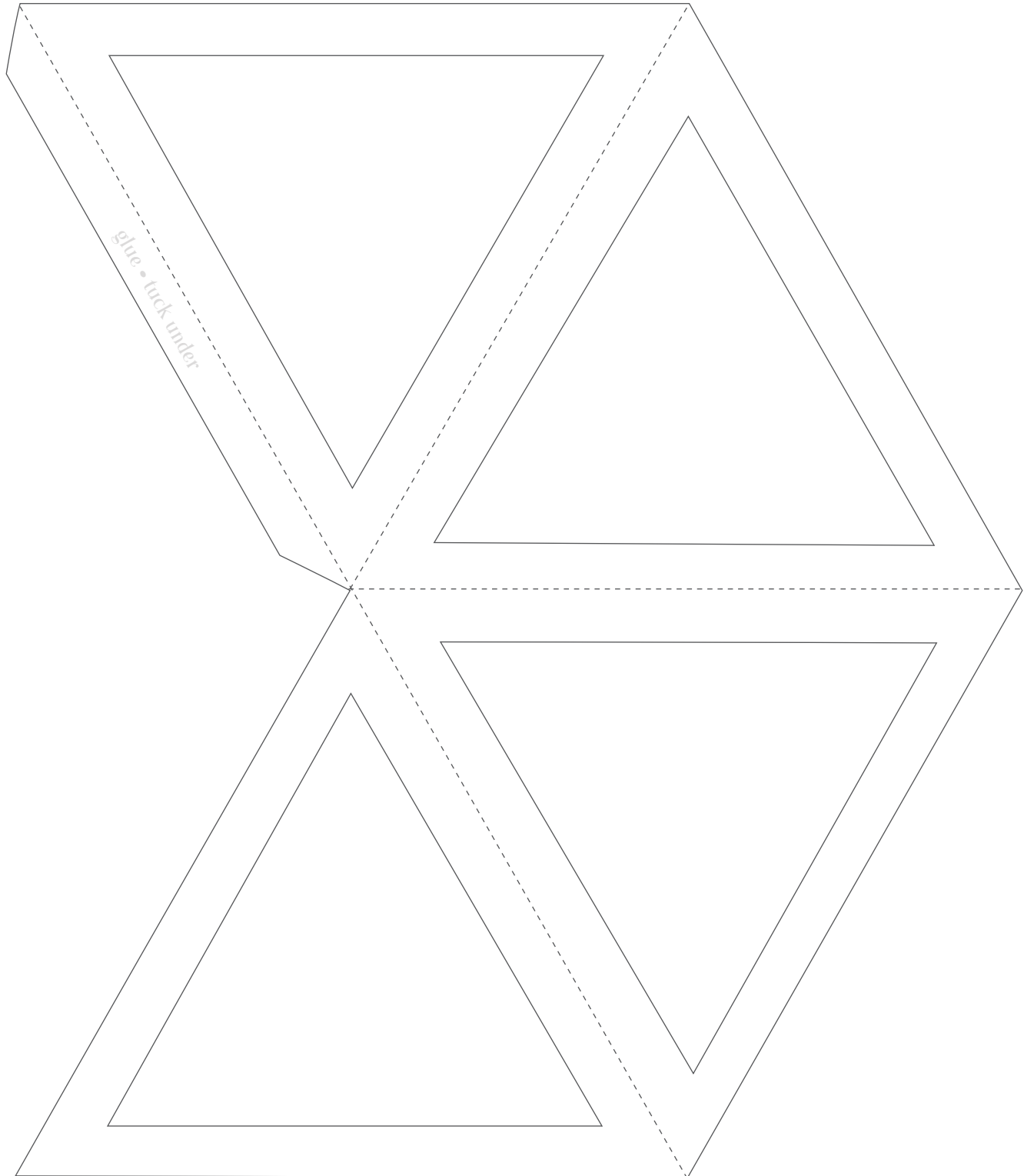




Create-Your-Own Lil' Lanterns

print template on heavyweight cardstock • cut along the edge
cut out interior shapes • back with translucent paper • score, fold and seal
add light source • attach to ribbon, string or twine • embellish • ta-da!





Create-Your-Own Lil' Lanterns

print template on heavyweight cardstock • cut along the edge
score, fold and seal • {optional} add light source
attach to ribbon, string or twine • embellish • ta-da!

